



WORKSPACE FOR GRAPHICS DESIGNED TO PERFORM ANYWHERE

Regardless of your industry, we deliver a Virtual Workspace that is advance and purpose-built for your specific workload. The integrated solutions support all the best 3D CAD design software, that will optimize application performance, accelerate your workflows, and increase productivity in a snap! We bring together all the aspects of your business in a single platform to increase collaboration, improve execution, and accelerate innovation.

Benefits:

- Run complex, real-time simulations, and software
- Speed up rendering time of photorealistic images and files
- Enable secure, work-from-anywhere work styles
- Support creative and technical professionals with the applications, data, and computer resources agility

Net One Asia delivers Virtual Workspace for professional artists, medical practitioners, designers, and engineers to support graphics-intensive applications and rendering.

Advance and purpose-built to addressing your challenges and breaking the confines of physical location, delivering resources from the data center, and providing secure access on any device, anywhere.

Overview

3D Performance. Dedicated NVIDIA T4 Tensor Core GPU

Centralise information & Data

Protected IP Security

Collaborate across the organisation

Virtual Workspace that is advance and purpose-built for your specific workload in a single platform to increase collaboration, improve execution and accelerate innovation

Architecture, Engineering and Construction

Empower architects, engineers, and designers to collaborate in real-time on designs

Common Applications: Adobe® Creative Cloud®, Allplan, ANSYS, Autodesk 3ds Max, Autodesk AutoCAD, Autodesk Revit, Bentley AECOSim, Bentley MicroStation

Healthcare

Deliver remote access for 3D volumetric viewing and editing of images to radiologists, physicians, and medical imaging specialists

Common Applications: PACS (Picture Archiving and Communication System), Eclipse Medical Imaging

Manufacturing

Compress design cycles and accelerate time-to-market, while protecting sensitive data and virtual access to photorealistic 3D models

Common Applications: ANSYS Fluent, ANSYS Mechanical, Autodesk AutoCAD, Autodesk Inventor, Autodesk 3ds Max, Dassault Systemes SOLIDWORKS, Dassault Systemes CATIA, PTC Creo, Siemens PLM NX

Education

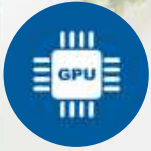
Provide lab access to graphics-intensive 3D software on any device, from anywhere

Common Applications: Autodesk 3ds Max, Autodesk AutoCAD, Autodesk Maya, Autodesk Revit, Dassault Systemes SOLIDWORKS, Esri ArcGIS



Accelerating virtual desktop experience optimized for performance, productivity and the flexibility to easily support real-time collaboration with 3D applications





ARCHITECTURE, ENGINEERING AND CONSTRUCTION



Graphics and simulation platform enables AEC firms to collaborate in real-time, any time, on any device

Software is critical to the day-to-day working life of any architecture, engineering, or construction professional. The AEC community depends on a varied set of solutions to power productivity and success. This range of software spans from design workflow applications to platforms used for project collaboration and documentation. By adding Nvidia vGPU virtualization technology, it accelerates real-time collaboration.



A fast-growing engineering firm sought to accommodate greater flexibility to onboard new people without having to incur the expense of adding IT infrastructure and resources. The team was also forward-thinking about their need to provide remote working capabilities to their geographically dispersed engineering and field technician groups for improved workflow processes & collaboration.

As they began evaluating virtual desktop infrastructure (VDI) solutions, they realized that the biggest challenge for providing remote workspaces for their users was their use of extremely demanding software applications, such as AutoCAD, Civil 3D, ArcGIS, Bentley FlowMaster, Bluebeam Revu, and BST Global.

Imperative to success would be to avoid investing a massive CapEx, and deliver uncompromising application performance, regardless of where work was being conducted. The solutions needed to be able to support CAD custom tools they developed in-house for increased efficiency, which provides a competitive advantage.

Overview

- ▶ Leverages GPU-accelerated VDI to support collaboration with centralized files
- ▶ Increased application performance for better productivity
- ▶ Increased mobility and productivity for users
- ▶ Use of low-cost endpoints and BYO devices
- ▶ Fortified security, while expanding remote work for outsourcing partners

“ Delivering get high-end workflows for architectural and engineering renderings and collaboration. Together we raise the bar on productivity and enhance user experiences”



Accelerating virtual desktop experience optimized for performance, productivity and the flexibility to easily support real-time collaboration with 3D applications